

# EXCELLENCE IN EDUCATION, RESEARCH, AND PUBLIC SERVICE: THE ECONOMIC & SOCIAL IMPACT OF MORGAN STATE UNIVERSITY

Dr. David Kwabena Wilson, President

## 2021 Update Summary

Econsult Solutions, Inc. Economic Impact Report **ESI** ECONSULT SOLUTIONS INC.

STUDENT ENGAGEMENT & SUCCESS

INNOVATION & ECONOMIC DEVELOPMENT

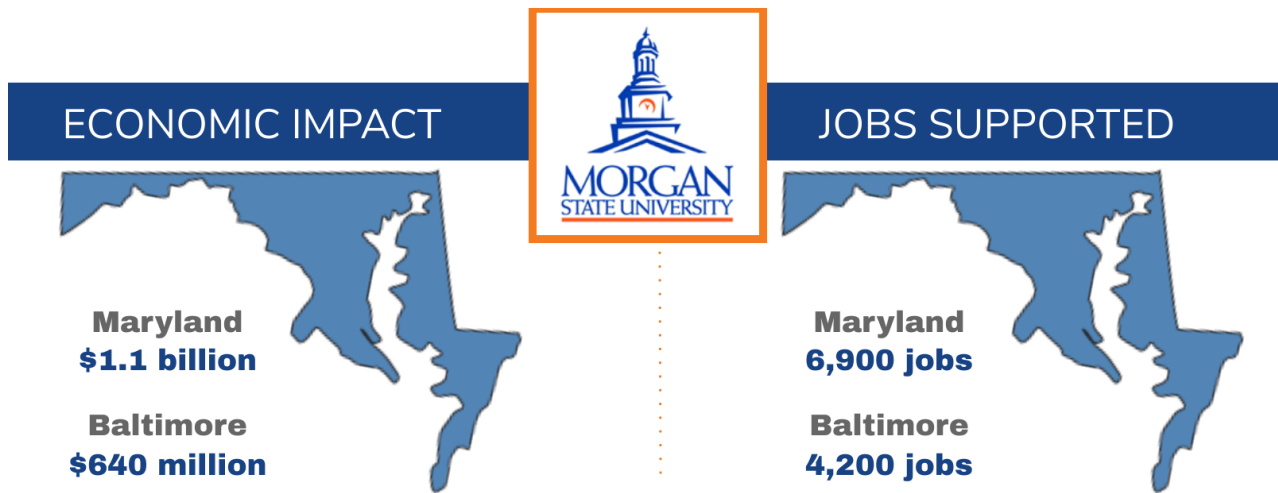
DIVERSITY

ENHANCING INFRASTRUCTURE

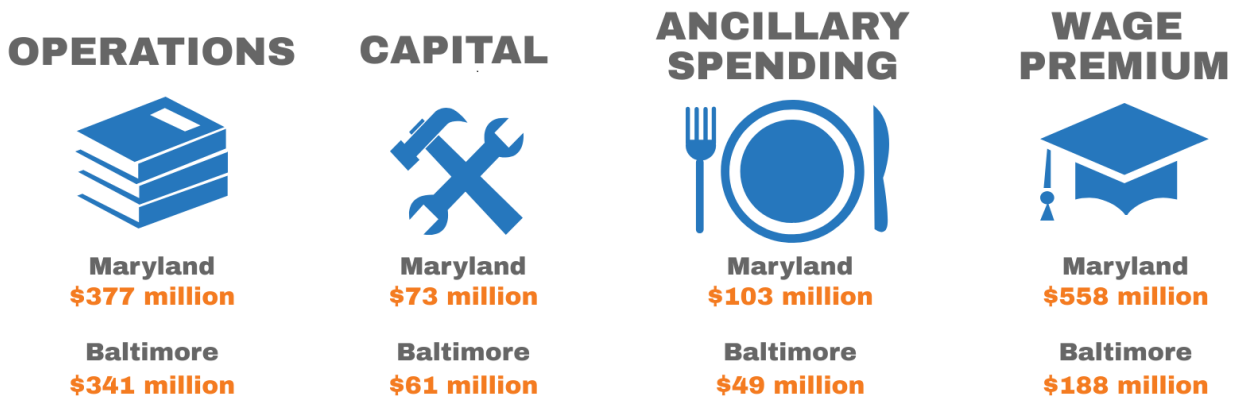
# THE ECONOMIC IMPACT OF MORGAN

Morgan is a major economic engine for the city and state annually producing **over \$1.1 billion in statewide economic impact**, supporting 6,900+ jobs and generating over \$53 million in state tax revenues. About 60 percent of that economic and employment impact occurs in Baltimore City.

## MORGAN STATE UNIVERSITY: TOTAL ANNUAL IMPACT



## ECONOMIC IMPACT BY CATEGORY



## ANNUAL TAX REVENUES

STATE OF MARYLAND  
**\$53 million**



CITY OF BALTIMORE  
**\$11 million**

Morgan produces over **\$1.1 billion a year** in economic impact in the state of Maryland.

# THE SOCIAL & COMMUNITY IMPACT

**Morgan State University is the preeminent public urban research university in Maryland.** For over 150 years, the university has been providing affordable high-quality education to students, producing research that enriches the state and serving as an anchor in Northeast Baltimore. Morgan has made monumental impact on the economy, community, and society in a number of ways that will prove beneficial for years to come.

## Morgan Capital Investments and Community Projects

- Calvin and Tina Tyler Hall Student Services Building
- Northwood Commons (Northwood Plaza Shopping Center Redevelopment Project)
- New Health & Human Services Building slated for completion in 2024
- New Science Complex slated for completion in 2027

*"First and foremost, we want to ensure the **continued success** of our students while keeping Morgan **affordable and accessible.**"*

Dr. David Wilson,  
President of Morgan State University

**Morgan's influence extends beyond the economy and into the community** through engagement activities that are mutually beneficial. Morgan supports over 4,200 jobs within Baltimore City and contributes to \$640 million in economic impact, including over \$11 million in annual tax revenue.

**NEARLY 17% OF MORGAN ALUMNI ARE EMPLOYED IN STEM FIELDS, VERSUS 11% FOR ALL MARYLAND SCHOOLS.**

**THE MORGAN COMMUNITY MILE ENGAGES WITH THE COMMUNITY TO IMPROVE THE QUALITY OF LIFE IN NORTHEAST BALTIMORE NEIGHBORHOODS.**

**THE OFFICE OF COMMUNITY SERVICE PROVIDES PROGRAMS THAT CONTRIBUTE TO THE UNIVERSITY'S 20,000+ HOURS OF STUDENT VOLUNTEER AND COMMUNITY SERVICE.**



**First** IN PRODUCING THE MOST DOCTORAL RESEARCH DEGREES AWARDED TO AFRICAN AMERICANS IN THE STATE OF MARYLAND



**First** AMONG ALL HBCUS IN THE PRODUCTION OF FULBRIGHT SCHOLARS

**First** IN AWARDING DOCTORAL DEGREES IN ENGINEERING TO AFRICAN AMERICANS IN THE STATE OF MARYLAND



**First** IN AWARDING BACHELOR'S & MASTER'S DEGREES IN ARCHITECTURE TO AFRICAN AMERICANS IN THE STATE OF MARYLAND.

# INNOVATION AT MORGAN

Morgan continues to foster a robust culture of innovation through an initiative called **Innovation Works** (I-Works), led by the **Office of Technology Transfer (OTT)**. The I-Works programs support faculty, staff, and students intellectual pursuits to create new innovations and technologies. Over 60 I-GAP grants have been awarded to faculty and staff to bridge the gap between the laboratory and the marketplace.

In FY 2020, the University set new records in Intellectual Property Disclosures, U.S. Patent Applications, Start-up Companies, Tech Transfer Agreements and issued U.S. Patents. The OTT currently receives a **new Intellectual Property Disclosure every 12 days, and files two new U.S. Patent Applications every month.**

The OTT also ensures the university recognizes and rewards Morgan innovation with the annual **Innovation of the Year Awards** and serving as host for **Morgan Innovation Day** in Annapolis, Maryland.

Innovation Works (I-Works)



- ✓ I-GAP
- ✓ I-Works (ISO)
- ✓ I-Works Community
- ✓ I-Start

## Per \$10 million in research expenditures,

Morgan produces Invention Disclosures, New Patent Application and other key innovation outputs (Issued U.S. Patents, Option & License Agreements, Start-up Companies) at a rate significantly higher than the state and national averages. **Morgan now generates from 2X to 9X the U.S. average** of these metric outputs per R&D expenditure input.

## Selected **Morgan** Research Units

- Patuxent Environmental & Aquatic Research Laboratory
- Cybersecurity Assurance and Policy Center
- ASCEND Center for Biomedical Research
- Goddard Earth Sciences, Technology and Research
- Center for Predictive Analytics
- National Transportation Center
- Center for Urban Health Disparities Research & Innovation

## INNOVATION BY THE NUMBERS

FY 2011 - FY2020

- 108** Intellectual Property Disclosures have been submitted by faculty and staff to the University.
- 25** U.S. Utility Patent Applications have been submitted by Morgan to the U.S. Patent and Trademark Office; 7 U.S. Patents issued.
- 19** U.S. Utility Patent Applications Pending (all since FY 2012)
- 6** Start-up companies have been formed by local entrepreneurs based on Morgan innovations

*"Our outlook is more than promising, and I look forward to solidifying Morgan as a top research university, making social and economic impact throughout Baltimore City and the state of Maryland."*

*Dr. Willie May, Vice President, Research & Economic Development*

## Morgan State University Board of Regents

Kweisi Mfume, Chair

General Larry Eliis, Vice Chair

Tracey L. Parker-Warren, Secretary

Harold Carter, Jr.  
Linda J. Gilliam, D.M.D.  
Burney Hollis, Ph.D.  
Shirley M. Malcolm, Ph.D.  
Stanley Nwakamma

Wayne Resnick  
Shelonda D. Stokes  
Carl Turnipseed  
Marquis T. Walker, Ph.D.  
Winston A. Wilkinson