

Instructional Excellence



ORA Faculty Development Session

February 2024

Dr. Laura Dorsey-Elson, Director
Center for Innovative Instruction & Scholarship





Morgan is “A University With Soul”

 Taking Note of Our Past: Morgan’s Uniqueness



MORGAN’S UNIQUENESS

- ACCESS Institution.
- Caring and belonging University.
- Commitment to quality teaching.
- Strong sense of African / African-American history, art, excellence and culture.

Growing the Future, Leading the World

MORGAN

Morgan's President Kelly Hill Research University • R1 Classified • Designated "A National Research"

"As we move forward to revise our tenure and promotion policies over the next 12-16 months, I will consult with the P&T Revision Committee and the Provost to make sure effective teaching will be appropriately valued and rewarded as we continue our research ascension."



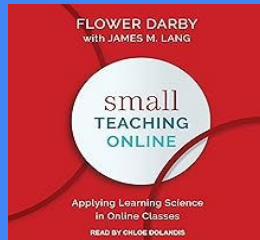
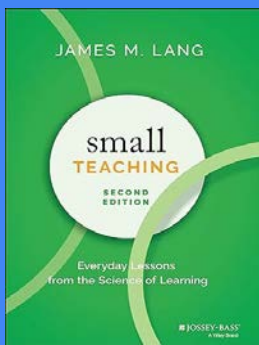


THE LAST TIME

- Reflective Teaching
- Science of Teaching & Learning
 - How Today's Students Learn
- Goals, Objectives & Outcomes...the Spine of ANY Course



- ❑ **Learner-centered classroom engagement strategies.**
- ❑ **Inclusive teaching practices for college learners.**
- ❑ **Traditional & Alternative methods of student assessment.**



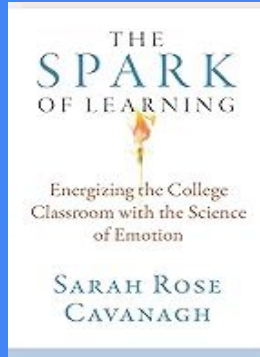
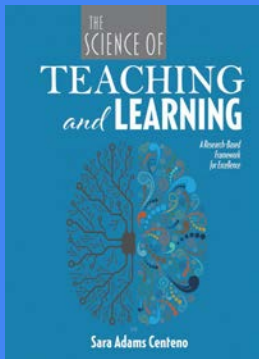
TEACHING TECHNIQUES FOR

Higher Education

Whether you find yourself teaching online, on-site, or a hybrid of both, our free teaching techniques are focused on helping *all* students learn and retain new knowledge and skills.

THE K. PATRICIA
CROSS
ACADEMY

<https://kpcrossacademy.org>



HARVARD GRADUATE SCHOOL OF EDUCATION

DEMONSTRATING MOVES LIVE RAW CLIPS LIBRARY FACILITATION GUIDE ABOUT

INSTRUCTIONAL MOVES

BUILDING COMMUNITY LECTURING INTERACTIVELY FACILITATING DISCUSSIONS TEACHING THROUGH PROBLEMS EDUCATING FOR EQUITY & INCLUSION

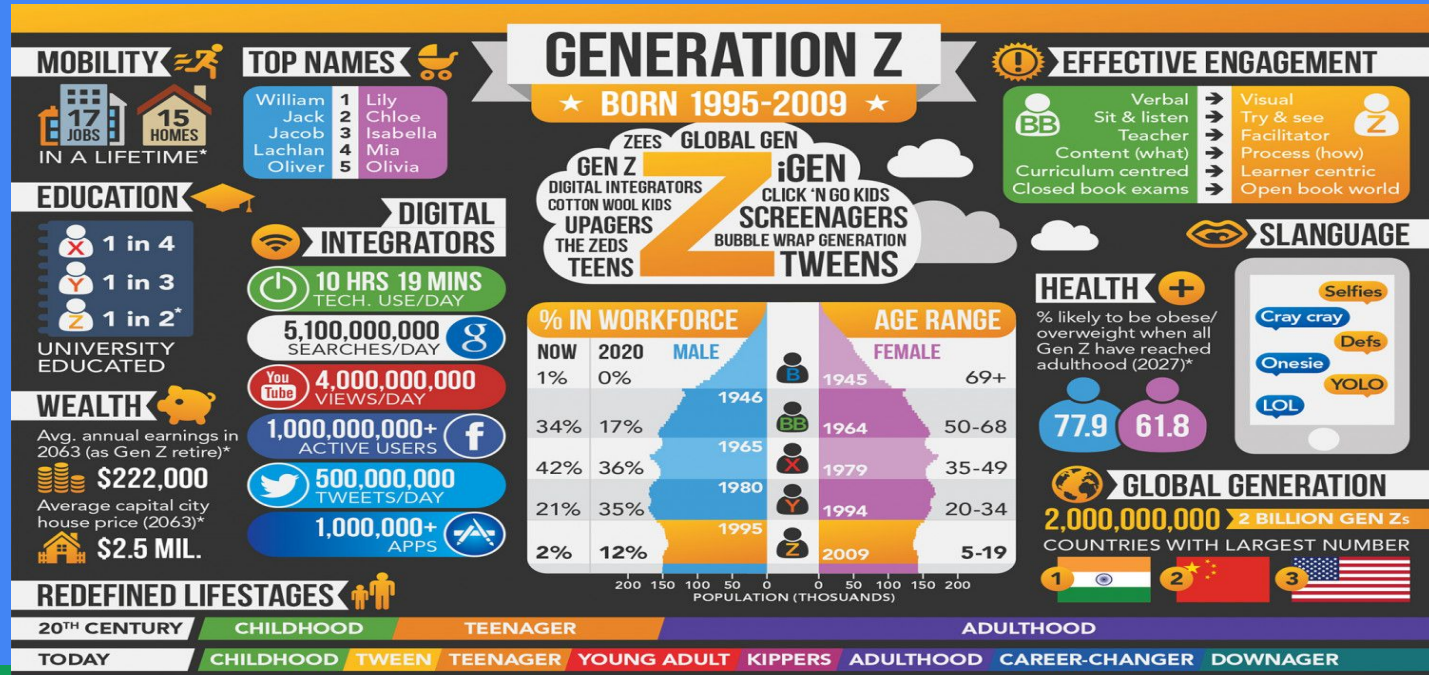
GREAT TEACHING CAN BE LEARNED

The goal of the Instructional Moves (IM) project is to help instructors incorporate and refine high-leverage teaching practices tailored to the higher education context.

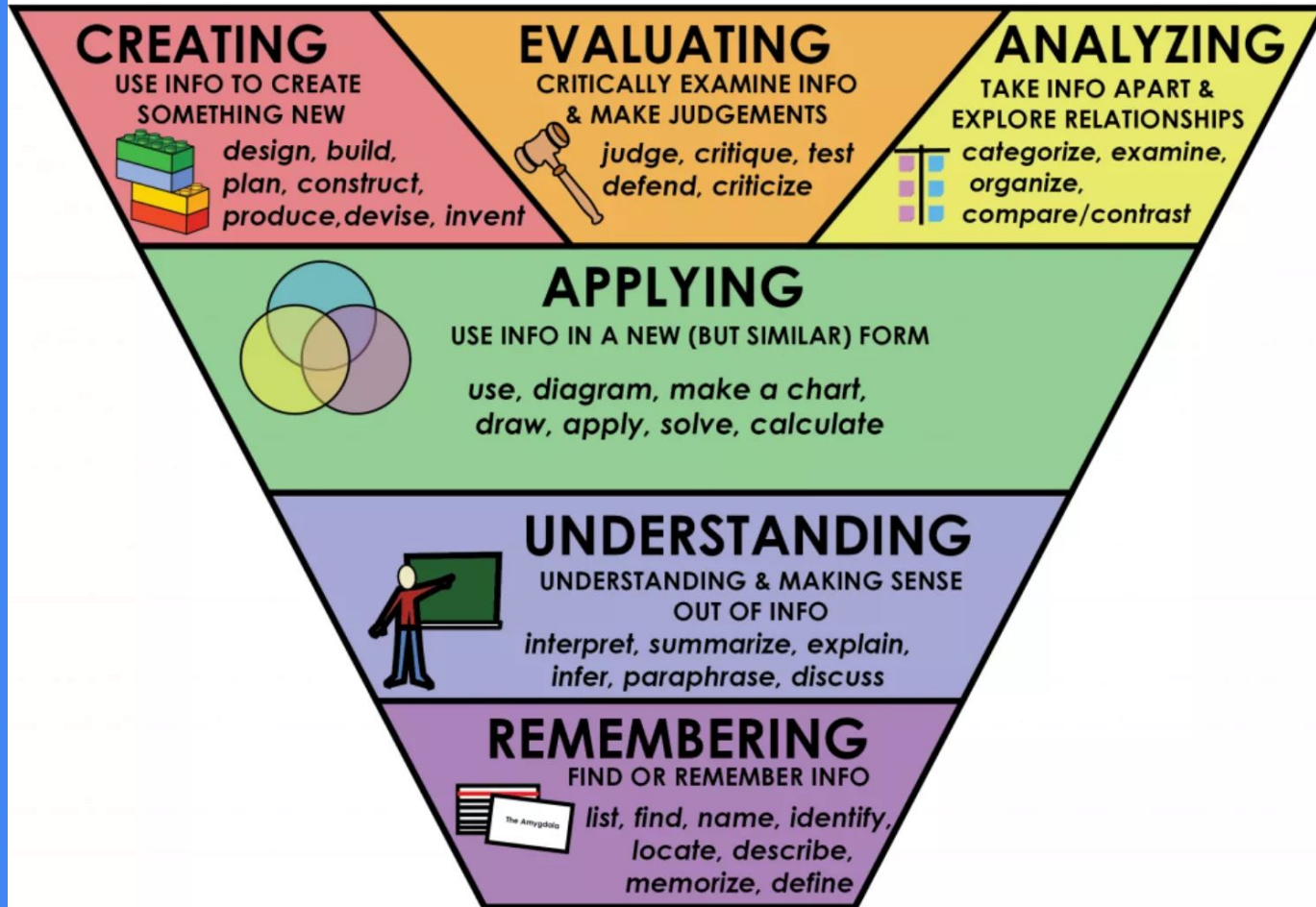
instructionalmoves.gse.harvard.edu



Today's Learners



BLOOM'S TAXONOMY



Differences

FORMATIVE

During the learning

Usually not graded

Greater variety of techniques and measures

SUMMATIVE

After the learning

Graded

More limited variety of measures



CENTER FOR INNOVATIVE INSTRUCTION & SCHOLARSHIP

SPRING & SUMMER 2024

- ❑ **The Discussion Project - January 8 & 9, 2024**
- ❑ **Mentoring Online Training Pilot - January 2024**
- ❑ **Spring 2024 Faculty Institute - January 10 & 11, 2024**
- ❑ **Spring 2024 Adjunct Academy: January 12, 2024 Via Zoom**
- ❑ **Morgan Institute for Strategic Teaching (MIST) - May 2024**
- ❑ **Authentic Assessment Strategies - Late Spring 2024 Date TBD**
- ❑ **Foundations Project - Summer 2024**



Faculty Development On Demand



[Center for Innovative Instruction ...](#)
[Center for Innovative Instructi...](#)

☰ ▾ MAGNA FACULTY & STAFF DEVELOPMENT ON DEMAND

☰ 🔗 [Magna Campus Subscription](#)



ciis@morgan.edu