

Accessibility in Charles County

By: Nicholas Wright, Conservation Innovation Center

Email: nwright@chesapeakeconservancy.org

Personal Email: nicholasjwright21@gmail.com

Background

Land Preservation, Parks, and Recreation Plan is mandated by the State of Maryland

Charles County, Maryland
Land Preservation, Parks,
and Recreation Plan

September 2017



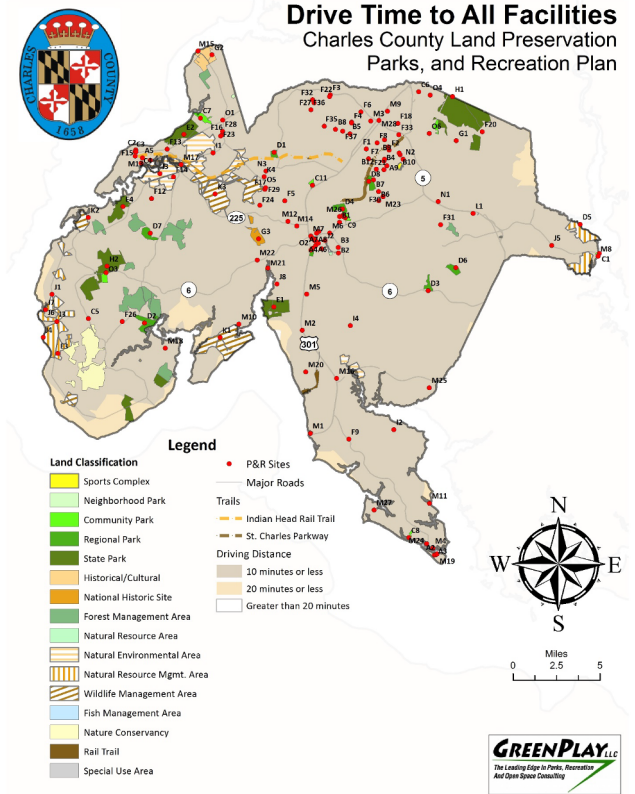
Problem Studied

Recognize ways to improve access to community centers, parks and green spaces.

- Public demand exceeds field capacity of current green spaces.
- Public transportation is limited
- Primarily rural area
- Roadway infrastructure isn't cyclist or pedestrian friendly

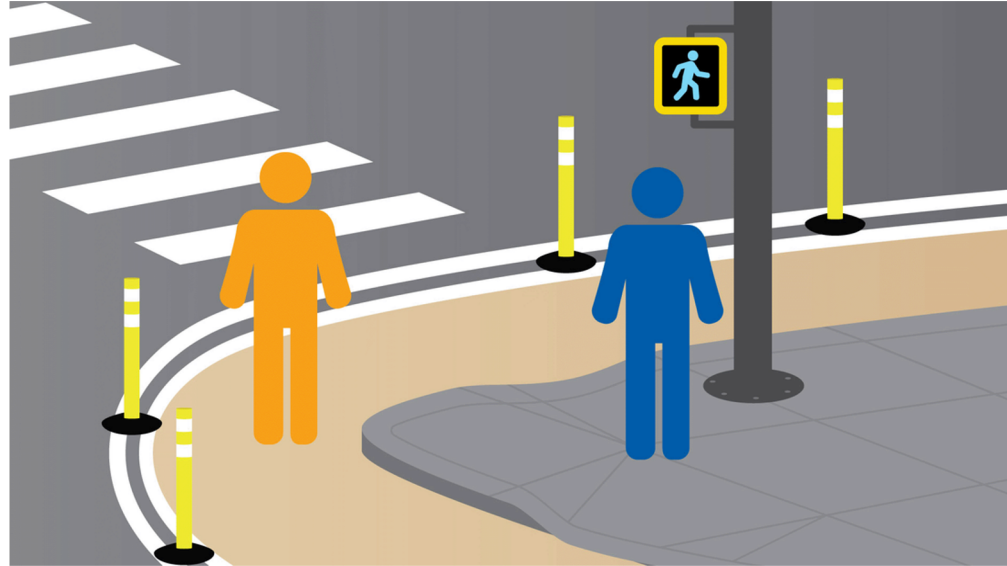
Data Researched

- Charles County Department of Parks and Recreation FY21 budget allocated for existing pedestrian and bicycle improvements.
- Waldorf is a developmental district and growing predominantly Black community.
- Children's Poverty is at 9%
- VanGo Bus system is user friendly and affordable.
 - Van Go utilizes an app for user for scheduling and updates.



Curb Extensions & Continuous Sidewalks

- Curb Extensions
 - Improves Safety for Pedestrians
 - Encourages Crossing at Designated Areas
 - Increases Availability for Public Spaces
- Continuous Sidewalks
 - Increases Driver Visibility and Awareness
 - Prioritizes Pedestrians and Cyclist

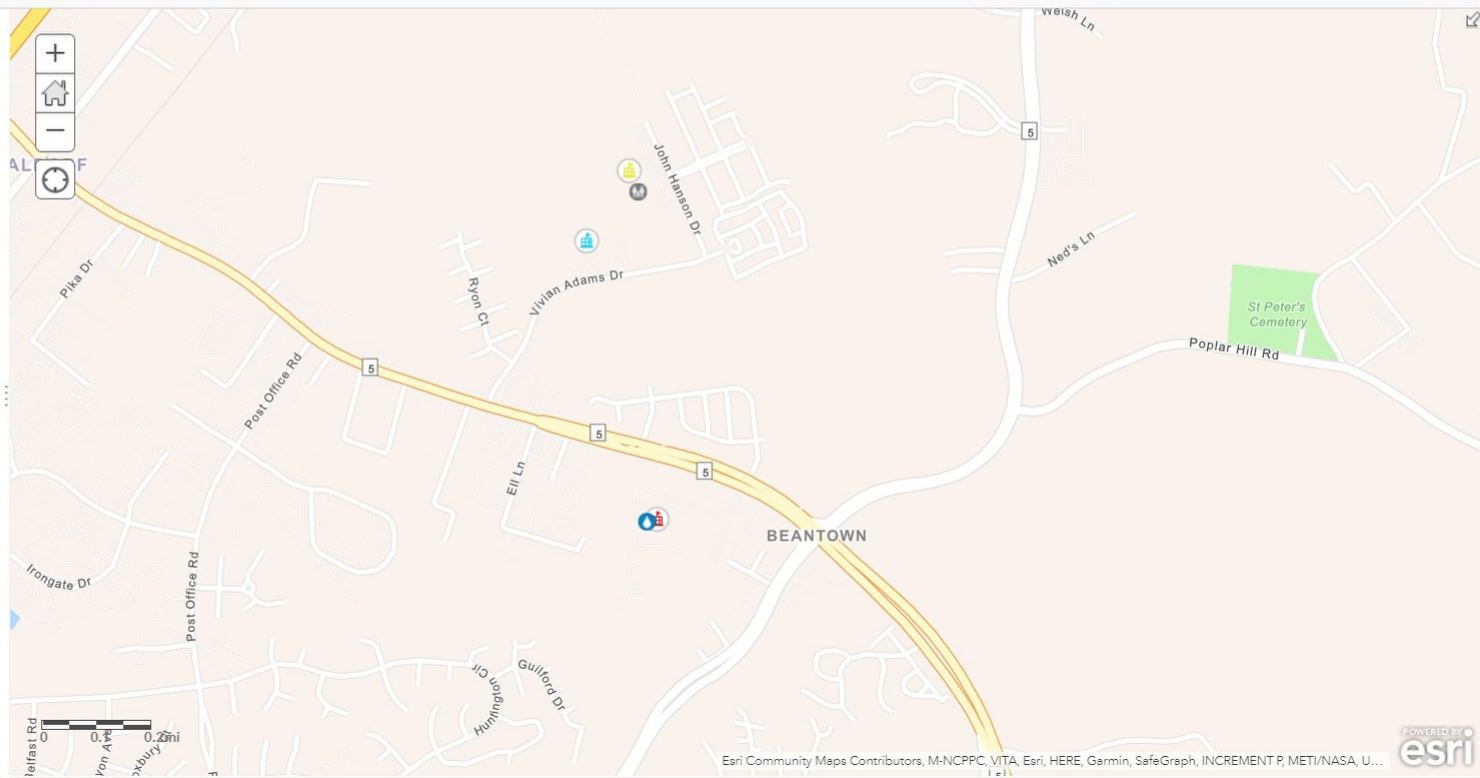




Details | Add ▾ | Edit | Basemap

Save ▾ | Share | Print ▾ | Measure | Bookmarks | Find address or place

- About
 - Content
 - Legend
- Contents
- CC Pools
 - Map Notes 1
 - Travel from CC Schools (10 15 20 Minutes)
 - CC Schools
 - Navigation



3780 MD-5 BUS

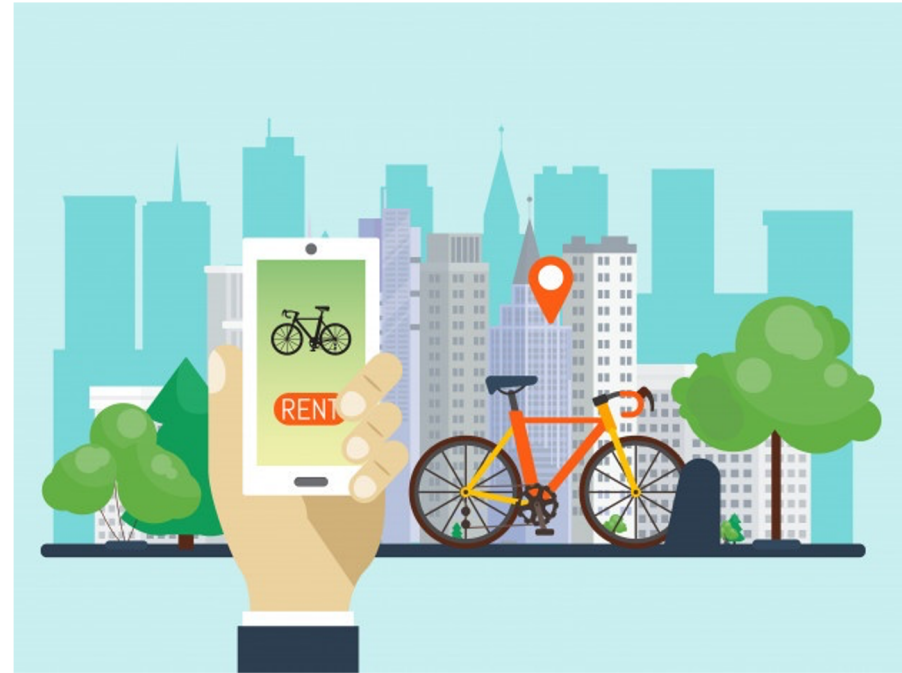
Waldorf, Maryland

[View on Google Maps](#)



Bike Sharing

- Socioeconomic
 - Improves Community Infrastructure
 - Creates Job Opportunities
 - Cost Effective
- Public Health
 - Lowers Childhood Obesity
 - Reduces Stress & Anxiety
 - Prevents Greenhouse Gas Emissions
 - Lowers Screen-time



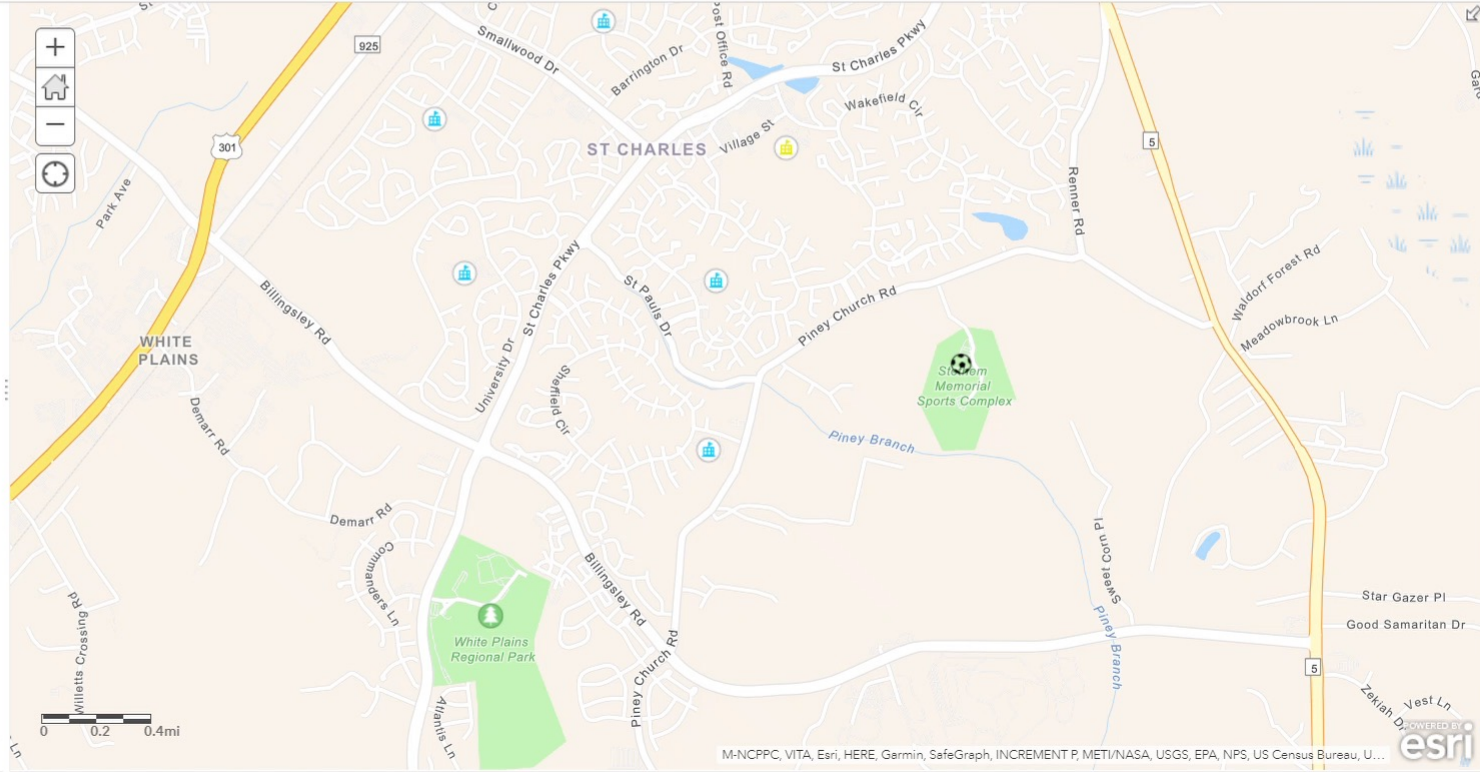
Details Add Edit Basemap

Save Share Print Measure Bookmarks Find address or place

About Content Legend

Contents

- Travel from CC Schools (10 15 20 Minutes)
- Travel from CC Bike Sharing Point layer (5 Minutes)
- White Regional Park
- Robert Stethem Memorial Sports Complex
- CC Bike Sharing - Point layer
- CC Schools
- Navigation



In Conclusion

Charles County wants to move forward exploring the possibility of curb extensions in local communities.

A bike sharing program is something Charles County expressed may be helpful in future plans of accessibility.

The screenshot shows the Charles County Maryland website. The navigation menu includes SERVICES, OUR COUNTY, GOVERNMENT (highlighted), BUSINESS, and I WANT TO... with a search icon. The breadcrumb trail is Government > Planning and Growth Management >. The main heading is Mapping Services. Below the heading are utility icons for Font Size, Share & Bookmark, Feedback, and Print. The page features eight map thumbnails arranged in a 2x4 grid, each with a dark blue caption box below it: GIS INTERACTIVE MAP, CENSUS TRACT MAP, COUNTY ROADS MAP, CRITICAL AREA MAPS, ELECTION DISTRICT MAP, LAND USE PLAN MAP, MATTAWOMAN STREAM VALLEY, and PRIORITY PRESERVATION. On the left side of the page, a sidebar menu lists various services, with 'Mapping Services' highlighted in blue. The sidebar menu items include: Planning and Growth Management (with sub-items: Apply for a Permit, Planning and Growth Management Appointment Request, Development Engineering, Education and Outreach); Mapping Services (with sub-items: GIS Interactive Map, Order a Map, Planning and Growth Management Supported Boards and Commissions); Preservation and Long Range Planning; Publications and Documents (with sub-items: Report a Structure or Property Complaint, Septic System Reimbursement Programs); and Stormwater Management (with sub-item: Temporary Outside Service Area Permit).

Questions?